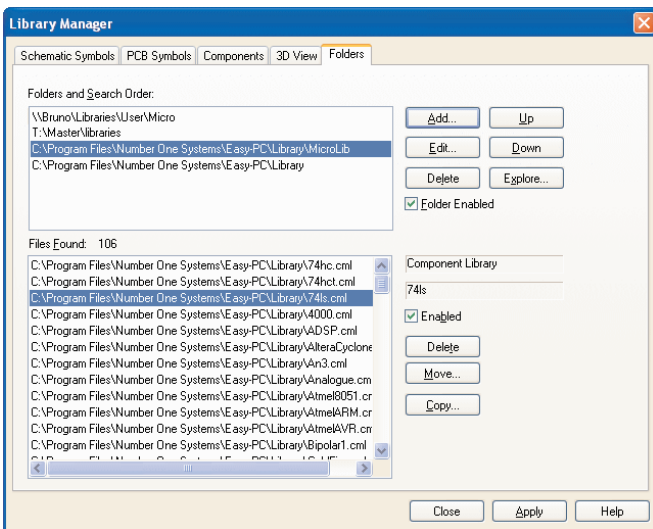


Easy-PC for Windows

Version 12.0 Update

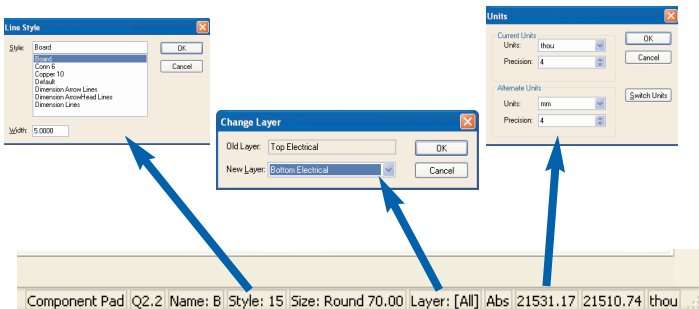
Library Manager Overhaul

Libraries are now held in a flat structure with a simple top-down lookup methodology. This means they are stored more logically and much easier to manage. Libraries can be stored in multiple folders and all accessed, searched and used simultaneously, even across network folders. User libraries can be held in separate folders if required for further management and categorisation.



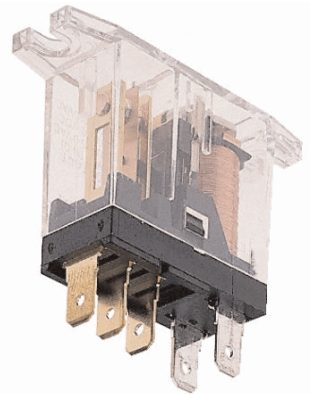
Active Status Bar

By double-clicking on displayed properties within the status bar you are able to instantly access options within Easy-PC. Options such as Grids, Units, selected item properties and coordinates are immediately available.



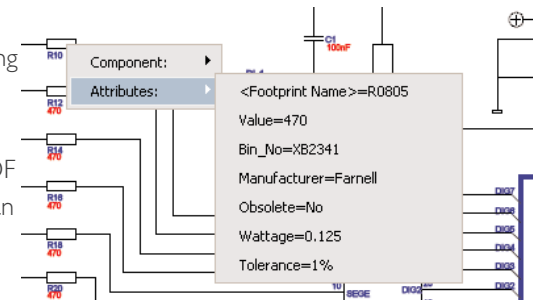
Slotted Pads

The ability to add slotted pads has been introduced to Easy-PC V12. The slot shape can be selected from a list of available shapes and easily added to the pad definition. The outputs to manufacturing will recognise the slotted pads and process them appropriately. Outputs for different types of slots are available, and slotted pads can be easily added to existing designs if required.



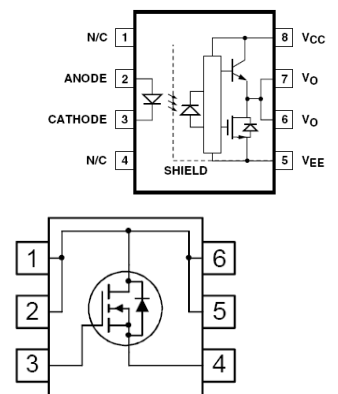
Active PDF Writer

Without the need to install a separate Windows driver, Easy-PC is supplied with its own PDF driver to create active PDF files directly from within the plotting dialog. The PDF file can be created with choices of content ranging from a flat 'picture' to a fully active PDF file. This file can contain active links showing net names, component names and values for example. As you hover your mouse over these items, their properties are revealed.

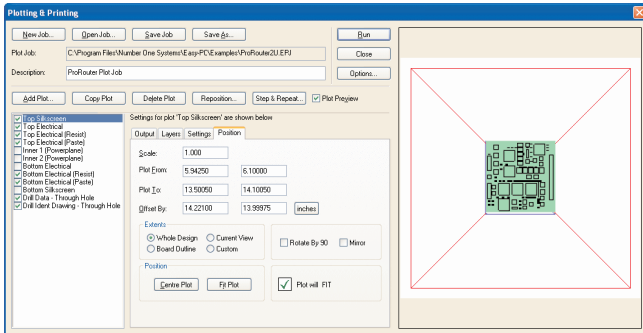


Mapping of one SCM Pin to Multiple PCB Pins

Further demonstrating Easy-PC's modern flexible internal data structure, additional technologies are easily catered for. Another new feature of V12 is the ability to map one Schematic symbol pin to multiple PCB footprint pins in the component library.



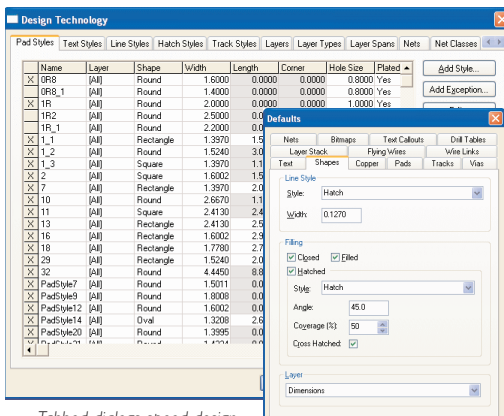
Plotting Dialog Improvements



The end result of every project with Easy-PC is the generation of the plot files. The V12 plotting dialog has been enhanced to display a Preview of the plot to be generated. This gives you better control preceding the final plot, and saves you time. This dialog has also been rearranged for clarity so that costly mistakes can be identified and avoided during the design process.

Tabbed Technology Dialog

Technology usage dialogs - Nets, Pad Styles, Track Styles, Line Styles have been consolidated to one easy-to-use dialog. This provides all your style management and organisation in one convenient location.

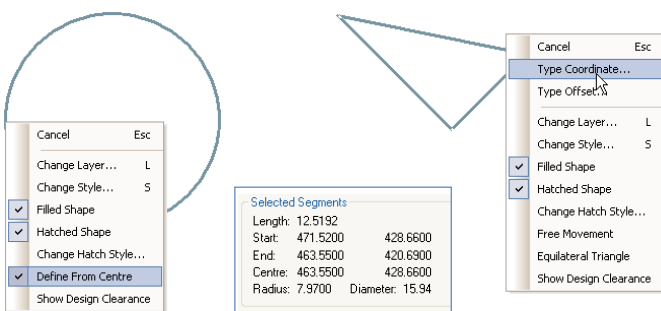


Tabbed dialogs speed design set-up and editing on utility dialogs

In addition, V12 has also consolidated the Remembered Styles pages into one new 'Defaults' dialog. These changes will declutter the menus and speed up the use of commonly used utilities in your everyday design work.

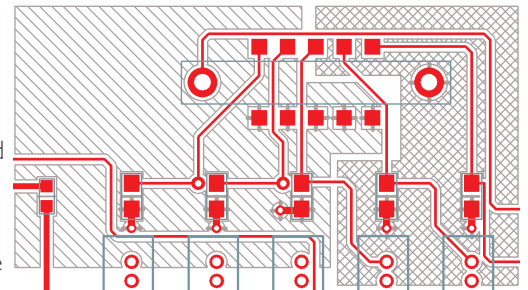
Shape Editing Improvements

To speed up and aid your design process, more shapes have been added to V12. You can now easily create square, triangle and line shapes from menu options. Other options to further facilitate the design process include diameter Properties for all arc and circles plus add and delete corner options. Fillet corner has been added to any angle corner not just orthogonal corners for that extra control.



Hatched & Cross Hatched Shapes

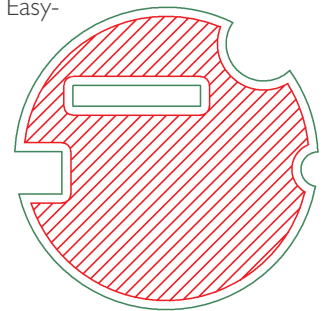
Hatch and cross hatching is now available for all shape types in Easy-PC. This flexible option allows different styles of hatching to be created and the direction and percentage of hatching coverage to be defined.



Hatching and Cross Hatching styles can be mixed in your designs

True Cutouts in Shapes

True cutouts have been added to Easy-PC. This means that in addition to being able to add cutouts to any shapes, you are now also able to cut shapes out of existing shapes. Cutouts enable more complex shapes to be created and for cutout shapes to be included in footprints.



Replicate Items into Array

Components and shapes can be easily selected and placed into a user defined array. Controls within the Replicate dialog enable non-equal X,Y arrays to be specified. The Easy-PC V12 release delivers productivity features to speed up your design process.

