

# Easy-PC For Windows

## Version 6.0 Update Product Release Information

Easy-PC For Windows, **Version 6.0**, is feature rich with many new options enhancing this already outstanding product.

### Online Design Rules Checking

In addition to the standard 'batch' design rules checking, you can also switch to using the instant design rules checking while editing the design. If an error will occur when the edit is attempted, a message is displayed warning you. The warning can be overridden or accepted. An error marker is produced if the design rule is overruled. The means that the design is right first time. The batch checking then only serves as final confirmation that all is correct.

### Single Button Press Plot Output

A brand new dialog encompassing all of the plot/printing output functions. Enables one button press to create all your manufacturing plots.

### More Tool Buttons on the Toolbar

With individual toolbars and more toolbar buttons, the toolbars add a new dimension to the overall customisability of Easy-PC. Toolbars can be floating or docked within the Easy-PC furniture. Toolbars can be switched on and off using a context menu.

### Library Wizards

Library Wizards have been added for Schematic Symbol creation, PCB symbol creation and Component creation. This vastly increases the creation of complex Symbols and simplifies the creation of Components. Wizards are an automated dialog which guide you through tasks which are difficult or tedious.

### Preview Windows in Library Manager

Preview Windows in Library Manager – Now available for the Component tab in Libraries, this shows SCM and PCB Symbol previews.

### DXF Import

DXF format files can be imported from your mechanical CAD system. This completes the design process from start to finish. Complex board outlines can be precisely created in a mechanical drawing package to fit the enclosure, then exported into the PCB design for population of the electrical items.

### Align Item

The Align option allows you to align design items with each other in the horizontal and vertical planes based around their right/left sides and centres.

### Load & Save Colour Files

Colour selections can be saved to file and reloaded. Colour files can be reloaded instantly off a Property bar selection and through the Colours dialog.

### 'Values' Editor

Values or Attributes within the design or Libraries can be selected and edited. New values can be added to single or multiple items using this dynamic option.

### New Display Speedbar

The Display Speedbar is available from the Preview bar and allows you to very quickly select new layers for display, select colour files, find components and find nets.

## System Requirements

- Pentium class PC
- Windows 95/98/ME
- Windows NT4.0/2000/XP
- 32MB of RAM (Minimum)
- 25MB hard disk space for program files
- CD-ROM drive

This specification includes full support for Windows 2000, Windows ME and Windows XP.

Note: **Easy-Spice** requires the same specification but uses an additional 30Mb of hard disk space.

## Swap Layers

This is used as an interactive tool for swapping layers in PCB. It swaps the track to the other layer and automatically removes unwanted vias. Used to enhance the manufacturability of the design.

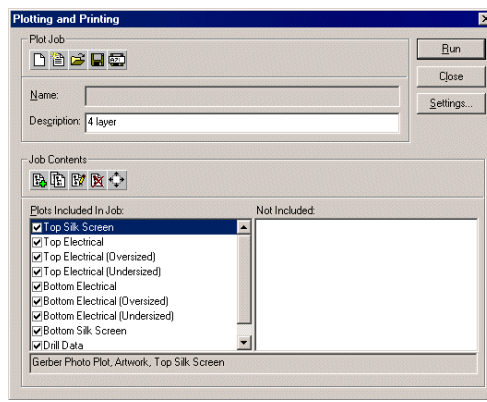
## Optimise Vias

This will automatically optimise the vias in the design by swapping the track layer and removing the vias. It has also been added as a back-end process to the Easy-Router II autorouter

## File Operations

**Reload File** – Reloads the current design from that saved on disk discarding the current edit.

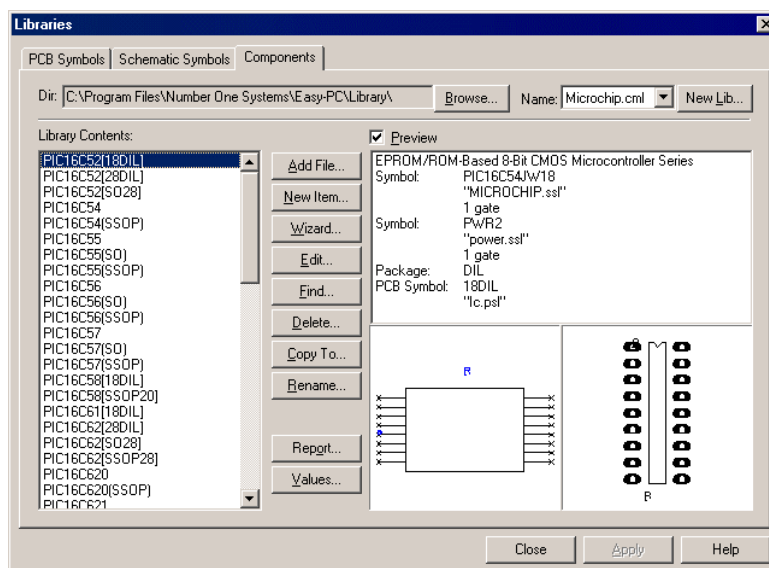
**Save All & Close All** – Used for Saving all open designs in one go and Closing all designs..



*The New single 'shot' plotting and printing option allows you to create all the plots required for a design in one button press.*

## V6.0 Major Feature Summary:

- Online Design Rules checking (DRC)
- Single button post processing
- New toolbars and more buttons
- Floating and Dockable toolbars
- Library wizards for fast Symbol and Component creation
- Preview windows in library manager
- DXF import
- Align tool for design items
- Save and Load Colour files
- Display Speedbar, incorporating:
  - Preview bar
  - Load Colour files
  - Layers On-Off
  - Find Net
  - Find component
- Values Editor
- Swap Layers tool
- Optimise Vias option
- Save and Close all designs
- Reload design From Saved option
- Net completion report
- Find dialog in Component Editor and Add Component Editor
- Show Owner during move of item
- View Selection
- plus more features



Number One Systems  
Oak Lane  
Bredon  
Tewkesbury  
Glos  
GL20 7LR

Phone: 01684 773662  
Fax: 01684 773664  
Email: info@numberone.com  
Web: www.numberone.com

*With a restyled library manager and new Symbol/Component wizards, Easy-PC For Windows enables you to process complex library information very quickly.*